



SOF NATIONAL
SCIENCE OLYMPIAD

Total Questions : 50

Time : 1 hr.

PATTERN & MARKING SCHEME			
Section	(1) Physics & Chemistry	(2) Achievers Section	(3) Mathematics or Biology
No. of Questions	25	5	20
Marks per Ques.	1	3	1

SYLLABUS

Section – 1 : *Physics* : Electricity and Magnetism, Electromagnetic Induction, Alternating current, Electromagnetic waves, Optics, Modern Physics, Semiconductor Electronics, Communication Systems.

Chemistry : Solid State, Solutions, Electrochemistry, Chemical Kinetics, Surface Chemistry, General Principles and Processes of Isolation of Elements, p-Block Elements (Group 15 to 18), d- & f-Block Elements, Coordination Compounds, Haloalkanes and Haloarenes, Alcohols, Phenols and Ethers, Aldehydes, Ketones and Carboxylic Acids, Amines, Biomolecules, Polymers, Chemistry in Everyday Life.

Section – 2 : Higher Order Thinking Questions - Syllabus as per Section – 1.

Section – 3 : Relations and Functions, Inverse Trigonometric Functions, Matrices and Determinants, Continuity and Differentiability, Application of Derivatives, Integrals, Application of Integrals, Differential Equations, Vector Algebra, Three Dimensional Geometry, Probability, Linear Programming.

OR

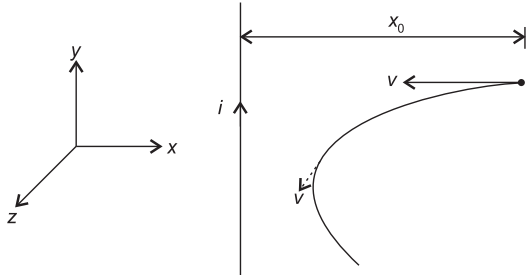
Section – 3 : Reproduction, Genetics and Evolution, Biology in Human Welfare, Biotechnology, Ecology.

PHYSICS AND CHEMISTRY

- A ray of light passes from vacuum into a medium of refractive index μ . If the angle of incidence is found to be twice the angle of refraction, then the angle of incidence is
 - $\cos^{-1}(\mu/2)$
 - $2\cos^{-1}(\mu/2)$
 - $2\sin^{-1}\mu$
 - $2\sin^{-1}(\mu/2)$
- A capacitor of capacitance C_0 is charged to a potential V_0 and then isolated. A small capacitor of capacitance C is then charged from C_0 , discharged and charged again, the process being repeated n times. Due to this, potential of the larger capacitor is decreased to V . The value of C is
 - $C_0 \left[\frac{V_0}{V} \right]^{1/n}$
 - $C_0 \left[\left(\frac{V_0}{V} \right)^{1/n} - 1 \right]$
 - $C_0 \left[\left(\frac{V_0}{V} \right) - 1 \right]^n$
 - $C_0 \left[\left(\frac{V_0}{V} \right)^n - 1 \right]$
- A ray of light in a liquid of refractive index 1.4, approaches the boundary surface between the liquid and air at an angle of incidence whose sine is 0.8. Which of the following statements is correct about the behavior of the light ?
 - It is impossible to predict the behavior of the light ray on the basis of the information supplied.
 - The sine of the angle of refraction of the emergent ray will be less than 0.8.
 - The ray will be internally reflected.
 - None of these
- An ore after levigation is found to have basic impurities. Which of the following can be used as a flux?
 - MgO
 - CaCO₃
 - SiO₂
 - FeO
- 1.00 g of a non-electrolyte solute dissolved in 50 g of benzene lowered the freezing point of benzene by 0.40 K. The freezing point depression constant of benzene is 5.12 K kg mol⁻¹. The molar mass of the solute is
 - 456 kg/mol
 - 352 g/mol
 - 256 g/mol
 - 240 g/mol
- When a compound 'X' is reacted with PCl₅ and then with NH₃, it gives 'Y'. When 'Y' is treated with Br₂ and KOH, it produces 'Z'. 'Z' on treatment with NaNO₂ and HCl at 0°C and then on warming with water produces *ortho*-cresol. Compound 'X' is
 - o*-toluic acid
 - o*-chlorotoluene
 - o*-bromotoluene
 - m*-toluic acid.

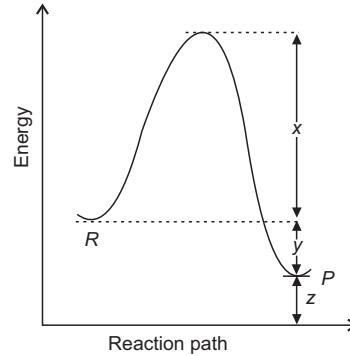
ACHIEVERS SECTION

7. A long straight wire carries a current i . A particle having a positive charge q and mass m , kept at distance x_0 from the wire is projected towards it with speed v as shown in the figure. The closest distance of approach (x_{\min}) of charged particle to the wire is



- (A) $x_{\min} = x_0 e^{-2\pi m v / \mu_0 q i}$
 (B) $x_{\min} = x_0 e^{m v / \mu_0 q i}$
 (C) $x_{\min} = x_0 e^{-\pi m v / \mu_0 q i}$
 (D) $x_{\min} = x_0 e^{-m v / \mu_0 q 2 i}$

8. Observe the given graph carefully.



The activation energy of the backward reaction, heat of reaction and threshold energy of the reaction respectively are

- (A) $x - y$, y and $x + y - z$
 (B) $x + y + z$, $y + z$ and z
 (C) $x + y$, y and $x + y + z$
 (D) $x + y$, y and $x - y - z$.

MATHEMATICS

9. If $\sqrt{(1-x^6)} + \sqrt{(1-y^6)} = a(x^3 - y^3)$ and

$$\frac{dy}{dx} = f(x, y) \sqrt{\left(\frac{1-y^6}{1-x^6}\right)}, \text{ then}$$

- (A) $f(x, y) = \frac{y}{x}$ (B) $f(x, y) = \frac{y^2}{x^2}$
 (C) $f(x, y) = \frac{2y^2}{x^2}$ (D) $f(x, y) = \frac{x^2}{y^2}$

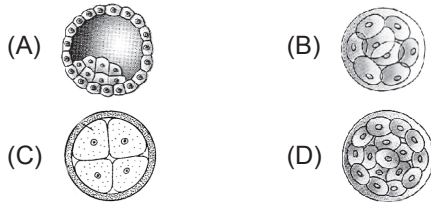
10. For non-zero vectors $\vec{a}, \vec{b}, \vec{c}$;

$$(\vec{a} \times \vec{b}) \cdot \vec{c} = |\vec{a}| |\vec{b}| |\vec{c}| \text{ holds iff}$$

- (A) $\vec{a} \cdot \vec{b} = 0, \vec{b} \cdot \vec{c} = 0$
 (B) $\vec{b} \cdot \vec{c} = 0, \vec{c} \cdot \vec{a} = 0$
 (C) $\vec{c} \cdot \vec{a} = 0, \vec{a} \cdot \vec{b} = 0$
 (D) $\vec{a} \cdot \vec{b} = \vec{b} \cdot \vec{c} = \vec{c} \cdot \vec{a} = 0$

BIOLOGY

9. In which of the following embryonic stages does the implantation take place?

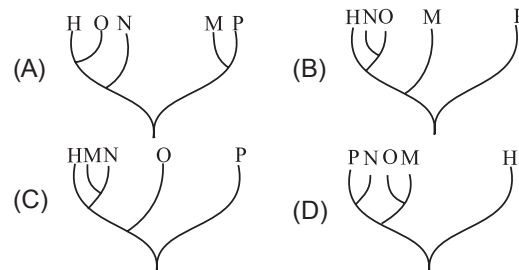


10. Human blood, when mixed with antibodies present in human blood, give maximum precipitation. If another animal's blood is mixed with antibodies present in human blood, the percentage of precipitation indicates evolutionary relationship

with that animal. The following experimental results were obtained :

Species: Human (H) - 100%; M - 37%; N - 75%; O - 79%; P - 17%

Which phylogenetic tree would best represent these results?



ANSWERS

- (PHYSICS AND CHEMISTRY) 1. (B) 2. (B) 3. (C) 4. (C) 5. (C) 6. (A) 7. (A) 8. (C)
 (MATHEMATICS) 9. (D) 10. (D)
 (BIOLOGY) 9. (A) 10. (A)